

Peace of mind

Protecting homes with a secure communications bridge to the outside world



Door entry kits communication and control



DOOR ENTRY KITS / MINI GUIDE

Distributor :

02982 - Door entry kits DL.05.2009.5K



Customer Services:

Tel: 0845 605 4333 Fax: 0845 605 4334
E-mail: legrand.sales@legrand.co.uk

Technical Support:

Tel: 0870 608 9020 Fax: 0870 608 9021
E-mail: technical.uk@legrand.co.uk

Head office:

Legrand Electric Limited
Great King Street North, Birmingham, B19 2LF
Tel: 0870 608 9000 Fax: 0870 608 9004
Website: www.legrand.co.uk

The Legrand logo is a registered trademark of the Legrand group of companies.



Door entry kits

Internationally renowned for the quality and reliability of its products, Legrand offers the security of access control with three ready-to-install door entry kits.



Extra-slim entrance panels offer discreet style with high quality audio and video components.

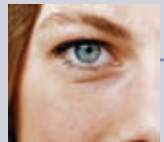
door entry kits with extra-slim surface mounting entrance panel



Audio

Modern style that fits perfectly with any decor. Two wire technology means that installation is as simple as a traditional door bell... making it ideal both for new installations and upgrades.

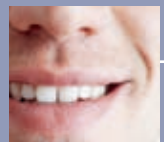
- Up to three audio handsets can be installed in the same property... all of which can be used as intercoms. Just lift the handset and press the button



Video

Clear black and white images allow users to immediately identify visitors. Just four wires are needed to transmit sound and image, with two wires to remotely open the door.

- Video handsets can also be used to discreetly keep an eye on what's happening outside... just press the button to take a look



Hands-free

With all the features associated with traditional video handsets, these new units offer the added bonus of hands-free 2 way speech at the touch of a button.

- Chat freely without even lifting a handset... just press the button



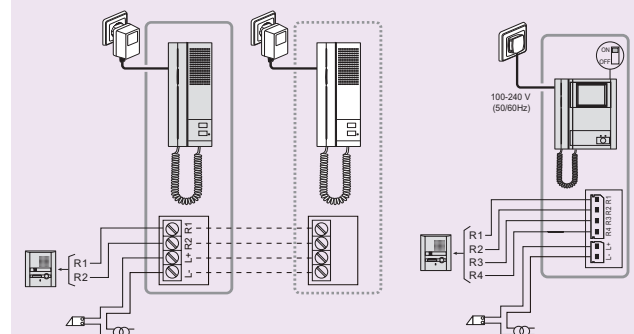
Pack Cat. Nos. Audio door entry kit

Pack	Cat. Nos.	Audio door entry kit
		Composition:
		• Extra-slim 1 pushbutton surface mounting entrance panel
		• Audio handset with transformer. Equipped with BS 1363 standard plug
		Features:
		2 x 0.5 mm ² (up to 50 m) wires between handset and entrance panel + 2 wires for door lock (not included)
1	3690 03	1 way audio kit
1	3690 08	Additional audio handset with transformer equipped with BS 1363 standard plug

Video door entry kits

		Composition:
		• Extra-slim 1 pushbutton surface mounting entrance panel
		• B/W video handset with 4" monitor and integrated power supply. Equipped with cable and BS 1363 standard plug
		Features:
		4 x 0.5 mm ² (up to 25 m) wires between handset and entrance panel + 2 wires for door lock (not included)
1	3690 53	1 way video kit B/W
1	3690 63	1 way video kit B/W hands-free

Wiring diagrams



Cat. No. 3690 03

Cat. Nos. 3690 53/63