

# Clang® trailer plugs and sockets

heavy duty extra low voltage



7 pin types conform to :  
 ISO 1185 for normal connectors (black interior)  
 ISO 3731 for supplementary connectors (white interior)

Pack	Cat. Nos.	Heavy duty 24 volt connectors
		<b>7 pin type<sup>(1)</sup></b> with black interior Unique nickel plated brass pins and socket tubes with beryllium copper circlips that provide exceptional performance
10	CT6895	Normal ISO socket with male connection
10	CT6896	Normal ISO plug with female connection
10	CT6896/H	Normal ISO plug with hook, female connection
		<b>7 pin type<sup>(1)</sup></b> with white interior
10	CT6936	Supplementary ISO socket with male connection
10	CT6937	Supplementary ISO plug with female connection
10	CT6937/H	Supplementary ISO plug with hook, female connection
		<b>10 pin type<sup>(1)</sup></b>
10	CT6859	Socket with male connection
10	CT6860	Plug with female connection
10	CT6860/H	Plug with hook, female connection

Pack	Cat. Nos.	Heavy duty 24 volt connectors (continued)
		<b>3 pin 25 A continuous rated<sup>(1)</sup></b> (45 A intermittently) Brass pins and socket tubes Designed for tail lift applications
10	CT6870	Socket with male connection
10	CT6871	Plug with female connection
		<b>Single pin 300 A continuous rated ≤ 3 hours<sup>(1)</sup></b> (400 A intermittently) Silver plated pins and socket tubes accept single core cables which are sweated into the plug and socket Designed for battery charging or vehicle starting
10	CT6877	Socket with male connection (supply)
10	CT6880	Socket with female connection (return)
10	CT6878	Plug with female connection (supply)
10	CT6879	Plug with male connection (return)
1	CTTC10203	Set comprising : 1 x CT6877 + 1 x CT6878
1	CTTC10204	Set comprising : 1 x CT6880 + 1 x CT6879

Pack	Cat. Nos.	Auxiliary 24 volt connectors
		<b>3 pin small 5 A continuous rated<sup>(2)</sup></b> Brass pins and socket tubes Designed for trailer lighting and heating applications
1	CT6745	Socket with female connection
1	CT6744	Plug with male connection

Pack	Cat. Nos.	Accessories
10	CT6764	Dust cover (boot) for rear protection of socket Can be used with 7, 10 and 3 pin heavy duty connectors
10	CT6881	Parking bracket for plug Can be used with 7 and 3 pin heavy duty connectors

(1) Zinc based alloy case with a zinc and trivalent chromium passivation finish providing a high degree of corrosion protection that exceeds the required salt spray tests

(1) Zinc based alloy case with a zinc and trivalent chromium passivation finish providing a high degree of corrosion protection that exceeds the required salt spray tests  
 (2) Brass case with nickel plated finish for maximum corrosion protection

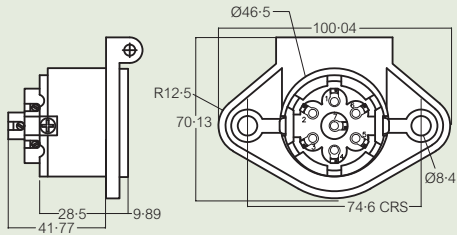
# Clang® trailer plugs and sockets

heavy duty 24 volt connectors

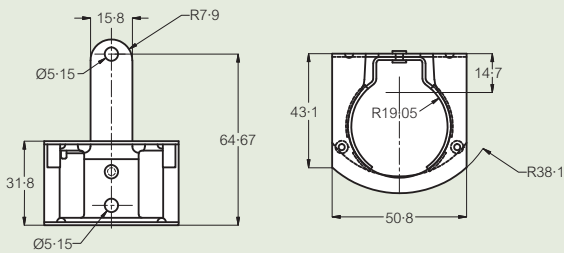
## ■ Dimensions (mm)

### 7 pin type with black interior

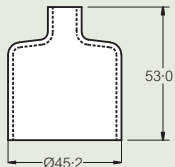
Cat. No. CT6895



Cat. No. CT6881

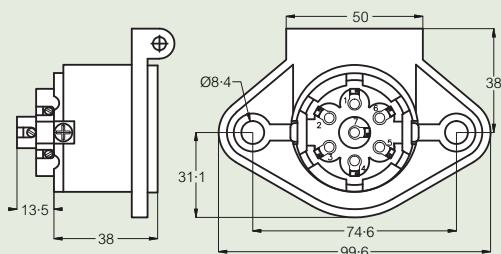


Cat. No. CT6764

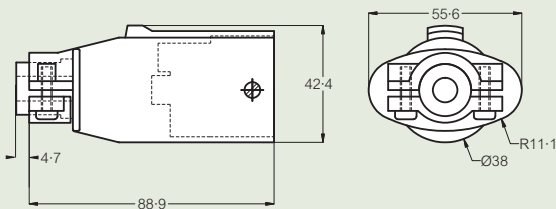


### 7 pin type with white interior

Cat. No. CT6936

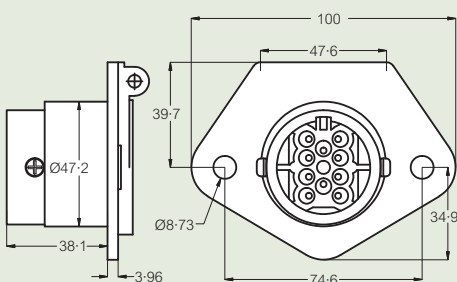


Cat. No. CT6937



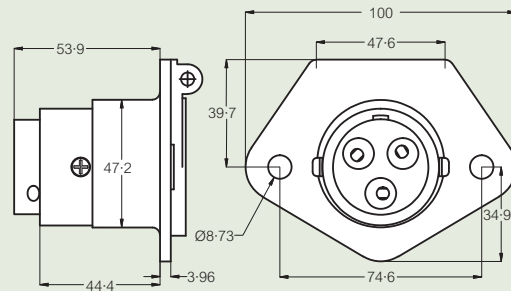
### 10 pin type

Cat. No. CT6859



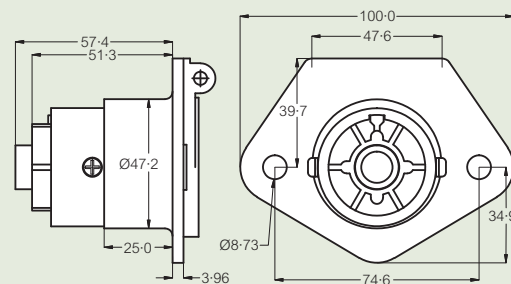
### 3 pin 25 A continuous rated

Cat. No. CT6870

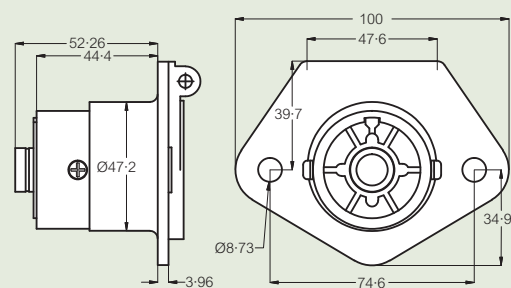


### Single pin 300 A continuous rated

Cat. No. CT6877



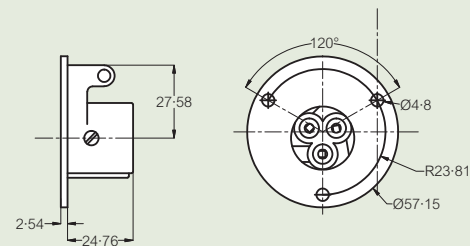
Cat. No. CT6880



## ■ Auxillary 24 volt connectors

### 3 pin small 5 A continuous rated

Cat. No. CT6745



Cat. No. CT6744

